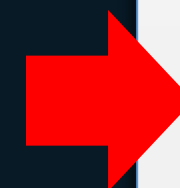
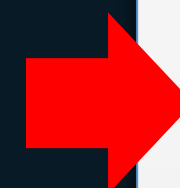
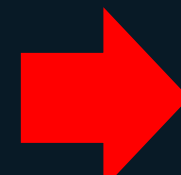
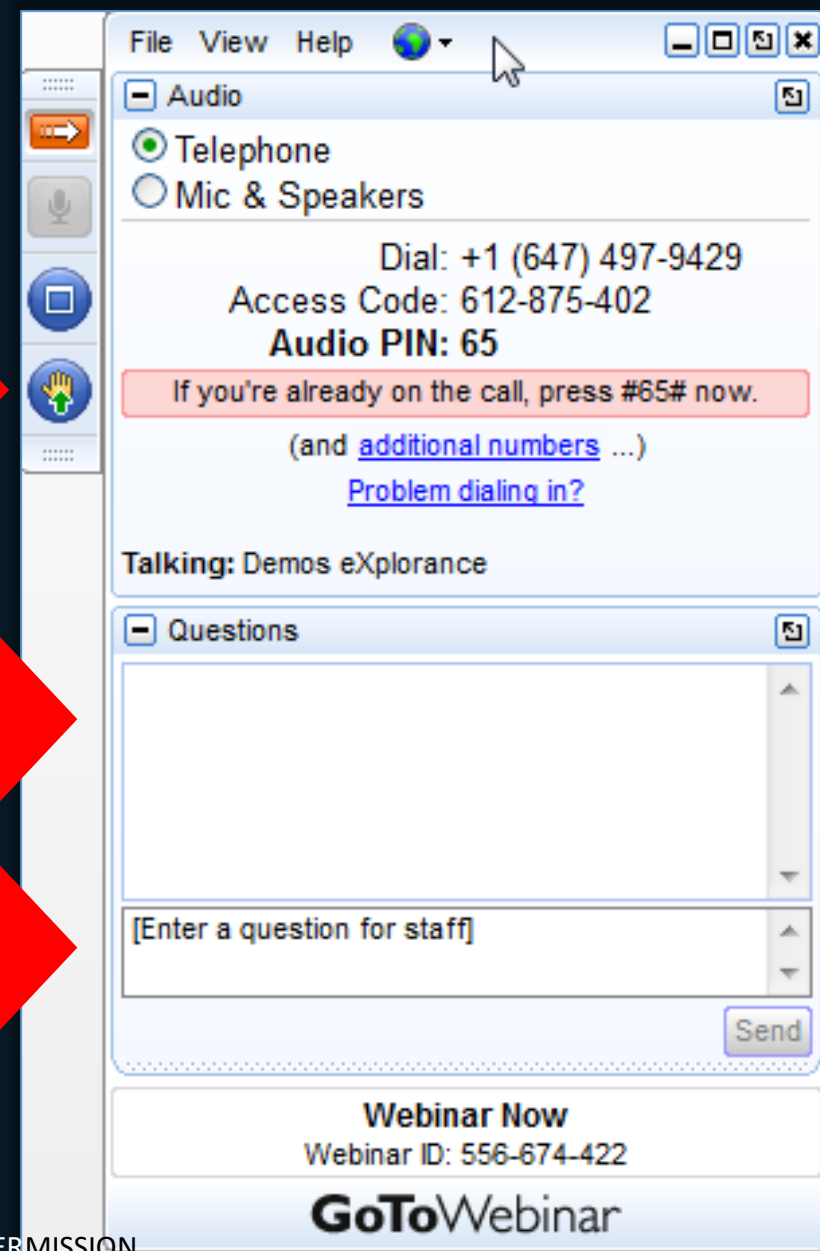


How to Use Blue Instructor Feedback Dashboard (IFD) to Empower Instructors

May 27, 2020

Before we get started...

- Q & A at the end
- Raise hand
- Enter question
- Question appears in the question pane

The screenshot shows the GoToWebinar interface. On the left is a vertical toolbar with icons for Audio, Video, Chat, and Raise Hand. The main area has two panes: 'Audio' and 'Questions'.

Audio Pane:

- Buttons: Telephone (selected), Mic & Speakers
- Dial: +1 (647) 497-9429
- Access Code: 612-875-402
- Audio PIN: 65
- Message: If you're already on the call, press #65# now. (and [additional numbers](#) ...)
- Link: [Problem dialing in?](#)
- Status: Talking: Demos eXplorance

Questions Pane:

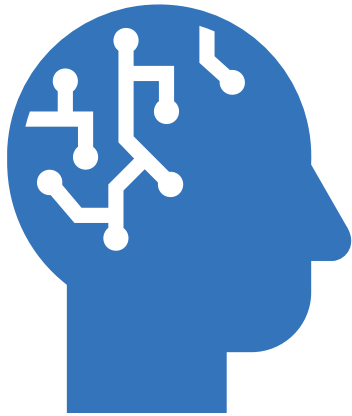
- Input field: [Enter a question for staff]
- Button: Send

Footer:

- Webinar Now
- Webinar ID: 556-674-422
- GoToWebinar

Agenda

Goal: Less than 1 hour



Background



Insights and
Value



Walk Thru

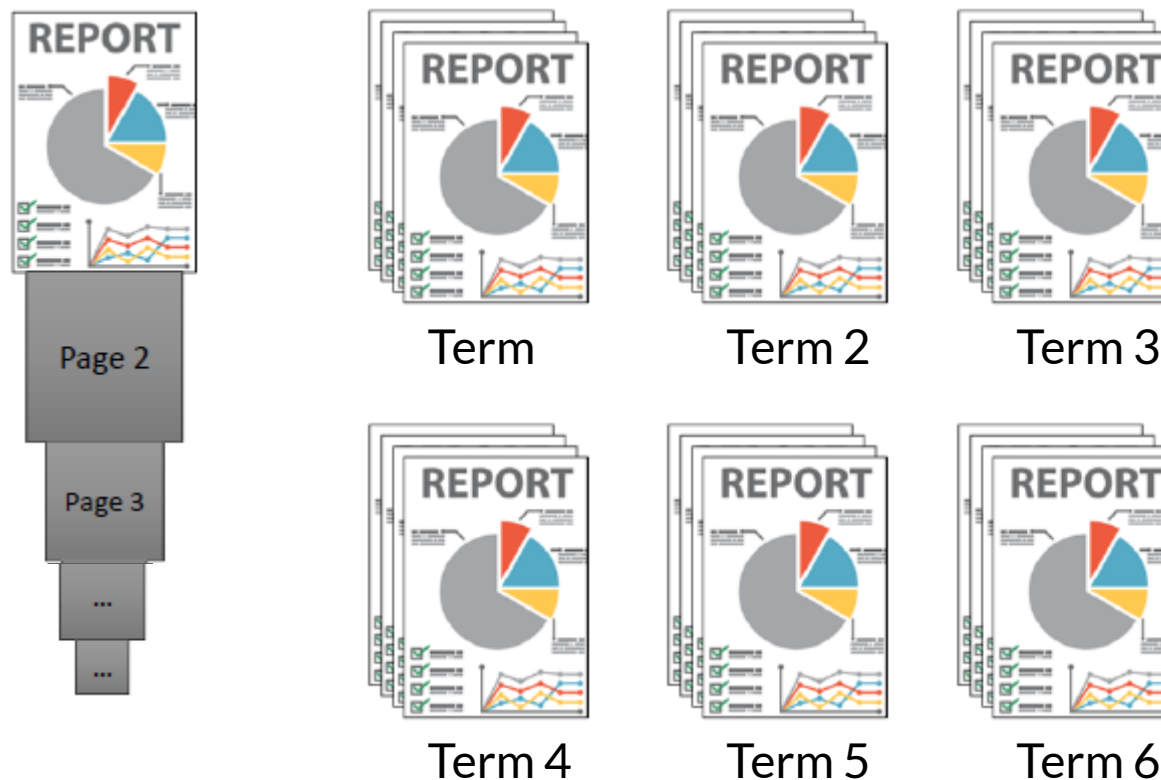


Questions

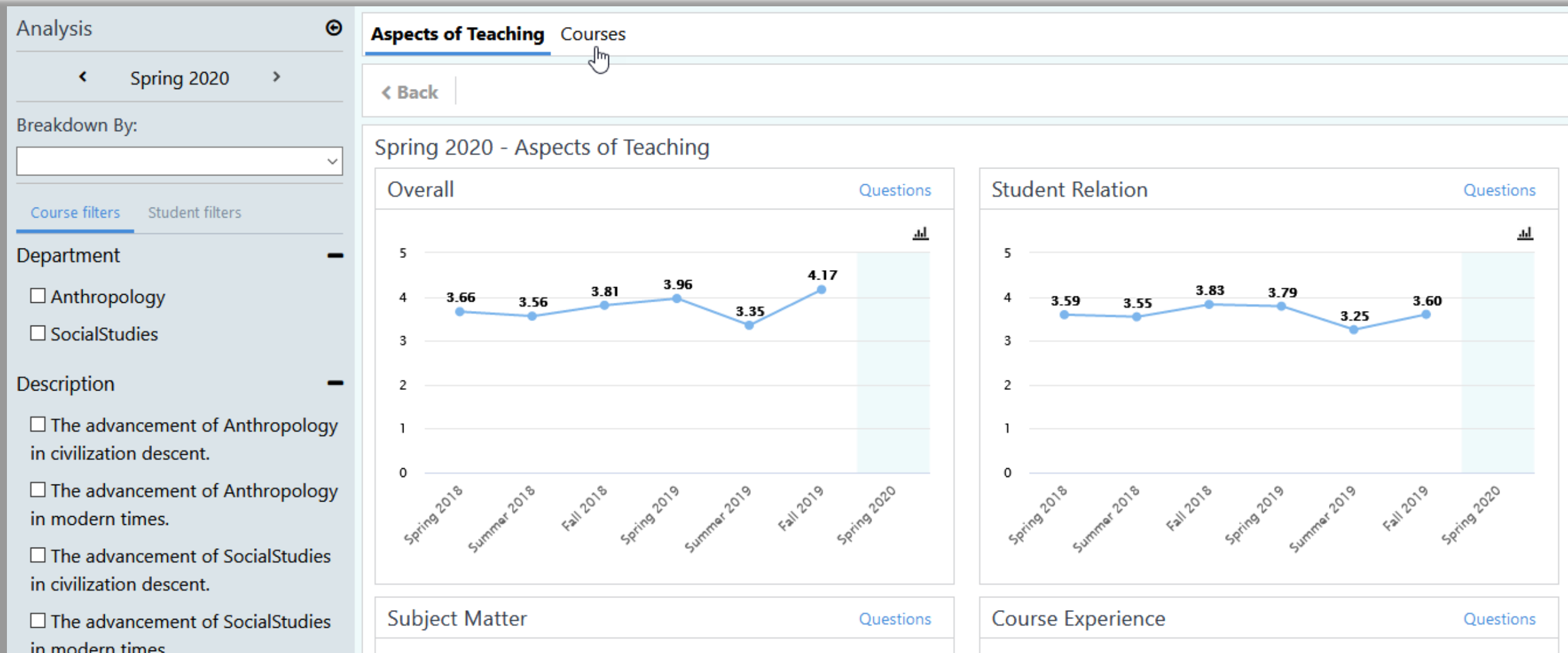
The Challenge of a Single Report

- What does a single score mean?
- Does it represent an issue or talent?
- Does that score represent an improvement or the contrary?
- What does that score say about some aspect of teaching?

The Challenge of a Single Report



What is the Instructor Feedback Dashboard?



Aspects of Teaching



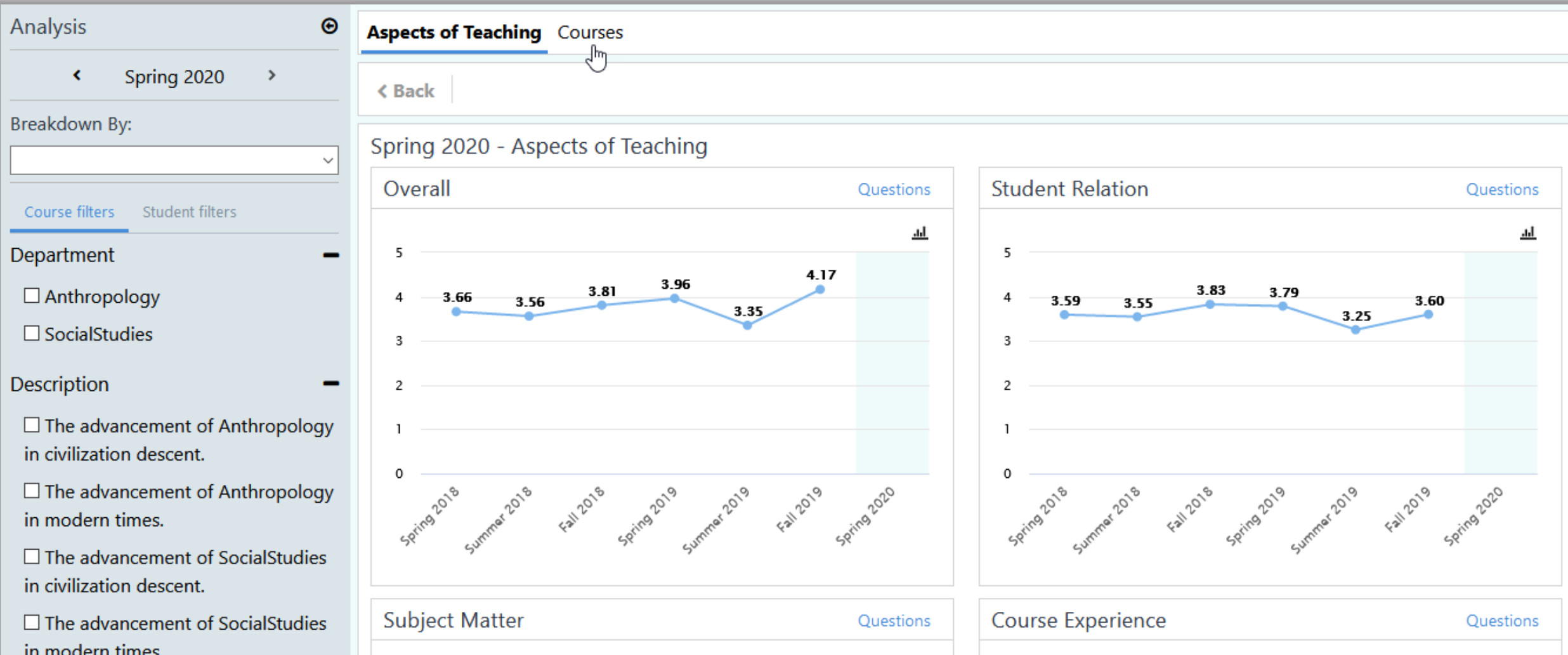
Protecting Confidentiality

Number of
Responses
per Course

Number of
Responses
per Student
Demographic



Demonstration



Wrapping up

- Contact email – learning@explorance.com
- BluenotesGroup.com
 - Future Webinars: www.bluenotesgroup.com/webinars/
 - Conference: www.bluenotesgroup.com/bluenotes-global-2020-conference/