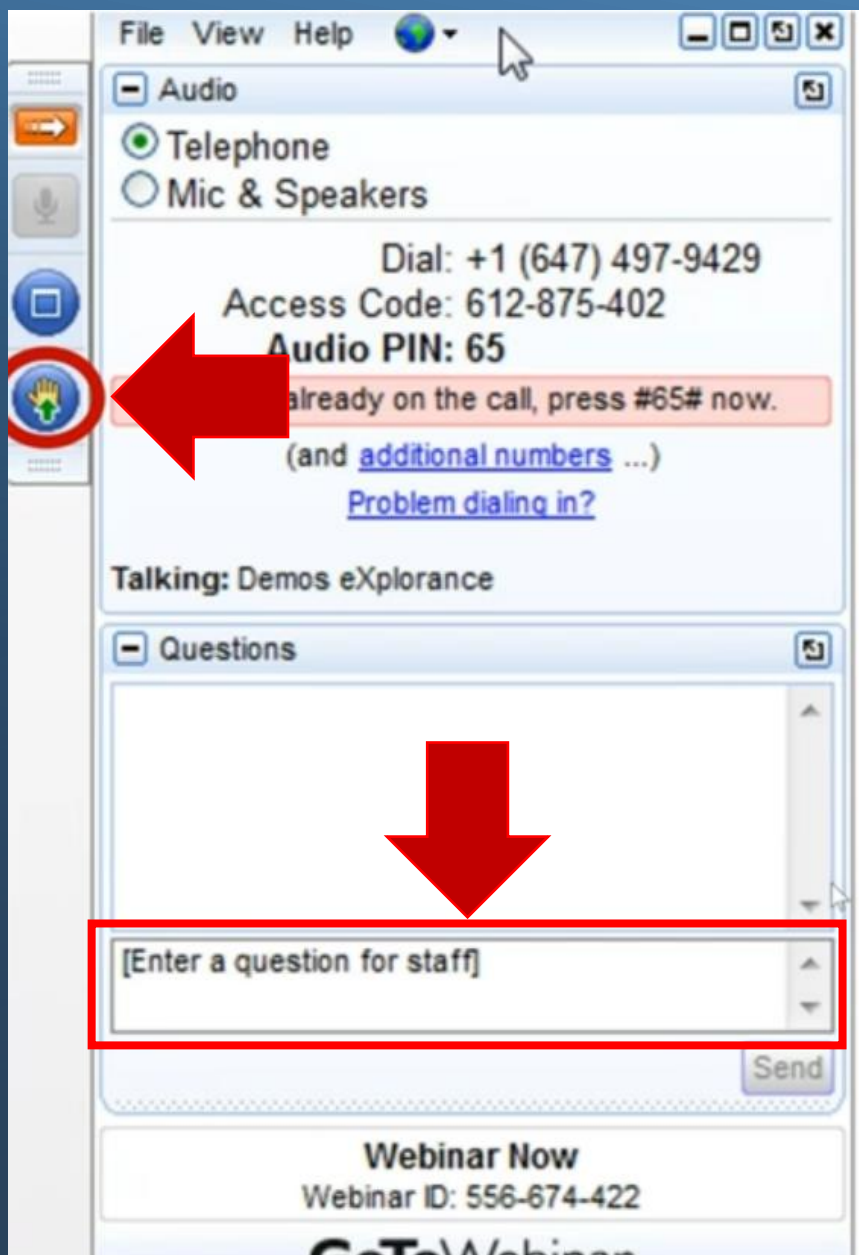
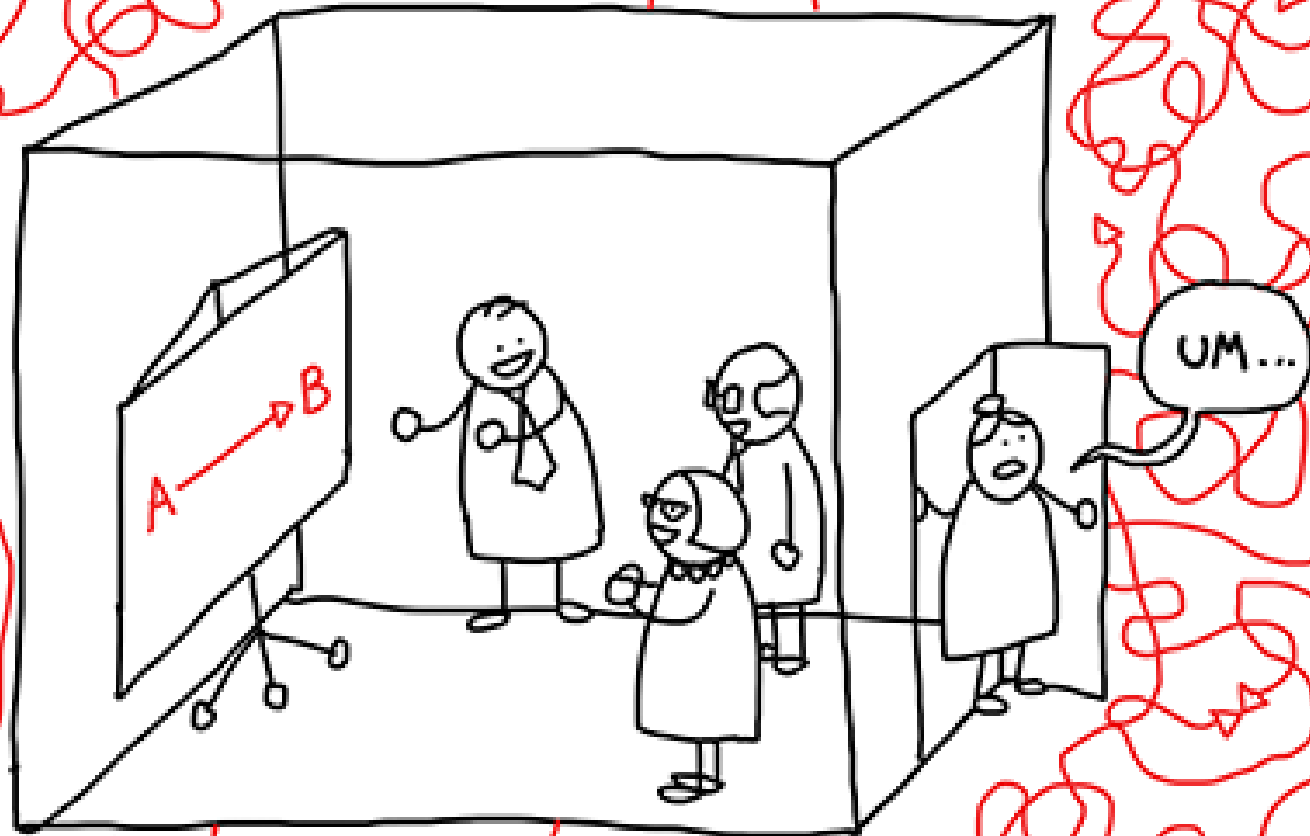


Beyond Course Evaluations: Matching Feedback Needs to Blue Project Types

May 18, 2022



Why is Blue so Hard?!





“

If the only tool you have
is a hammer you tend to
see every problem as a nail

- Abraham Maslow

Definition

Editing:



Info Organizational Links Groups Shared Groups Filters Language

Definition Title en ★

Description en

Type

☒ Subjects
☐ Primary/Secondary Subject Pairings
☐ Primary/Secondary Subject Pairings - Multiple Secondary (Multiple Secondary Pairings)
☐ Data Integrity Gateway (DIG)

Subject Source ▼ en ★ (Primary Caption)

Secondary Source ▼ en (Secondary Caption)

Pairing Source N/A (Primary/Secondary)

- **Surveys Basic**
- **360 Basic**
- **Course Evaluations**
- **Advanced BAC**
- **Report Master Camp**
- **Expert Camp**



Simple/Typical

One Thing



Subjects

Multiple Single Things



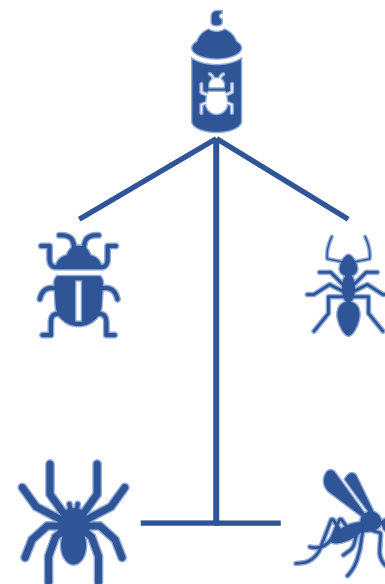
Pairing

Pairs of Things



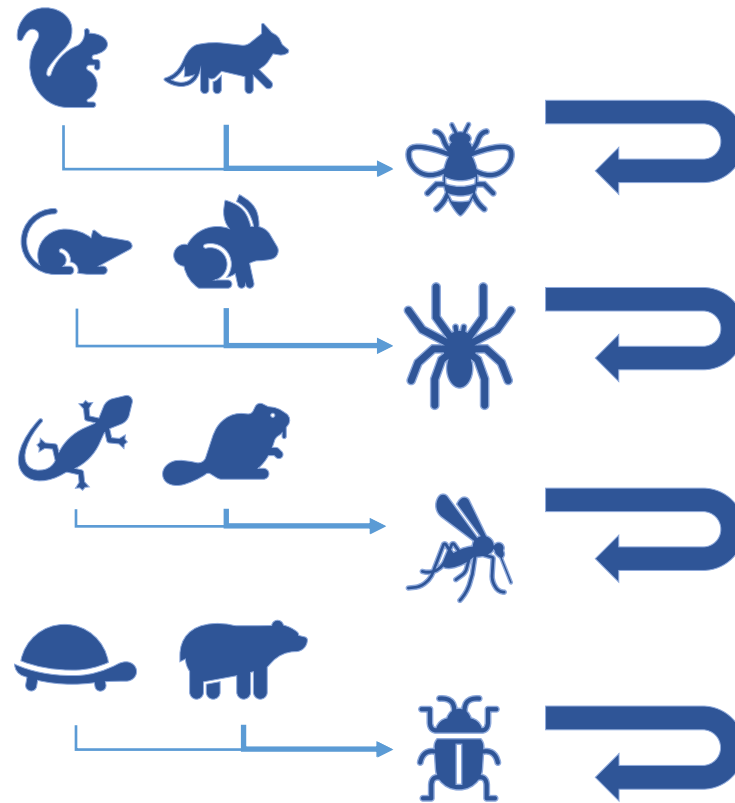
Multiple Secondary

Individual things connected to multiple other things



Subjects

*Multiple Single
Things*



Info	Organizational Links	Groups	Shared Groups	Filters	Language
Definition Title	<input type="text" value="*360 Performance Evaluation"/>				en ★
Description	<div></div>				en
Type	<div> <input checked="" type="radio"/> Subjects <input type="radio"/> Primary/Secondary Subject Pairings <input type="radio"/> Primary/Secondary Subject Pairings - Multiple Secondary (Multiple Secondary Pairings) <input type="radio"/> Data Integrity Gateway (DIG) </div>				
Subject Source	<input type="text" value="Staff"/>	<input type="text" value="Staff"/>	en ★ (Primary Caption)		
Secondary Source	<input type="text"/>	<input type="text"/>	en (Secondary Caption)		
Pairing Source	N/A (Primary/Secondary)				

Info
Organizational Links
Groups
Shared Groups
Filters
Language

Groups

Results: 0 - 0 of 0 Item(s)

Group Name	Privileges	Link Type	Edit

Group Details

Group Name

Staff

en

★

Link Type

Links to

▼

Datasource

Staff

▼

★

Link Field

Reference ID

User ID

▼

★

In

Staff

▼

is User ID in

Staff

▼

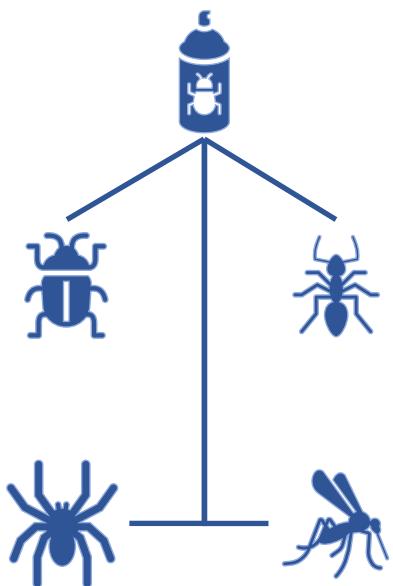
★

Privileges

☐ Rater Selection [RS]
☐ Rater Selection Signing [RSS]
☐ Questionnaire Personalization [QP]
☐ Questionnaire Personalization Signing [QPS]
☒ Fillout [FO]
☐ Fillout Signing [FOS]
☐ Report Creation [RC]
☐ Report Viewing [RV]

Multiple Secondary

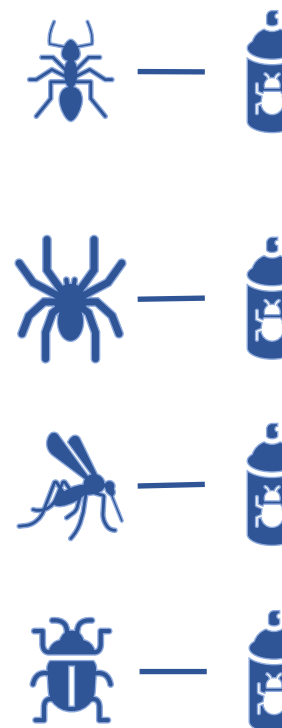
*Individual things
connected to multiple
other things*



1. Instructor questions only
2. Instructors opt in
3. Instructors control release

Pairing

Pairs of Things





Contents

Get started

User guides

Solutions and best practices center

General guides

Higher education

Create end-of-term course evaluations

Create midterm course evaluations

Create course evaluation reports for students that include instructor commentary

Blue best practices

Basic guides

Webinars

Add-on product guides

Technical Resources

Community resource sharing center

Participant user guides

>> [Solutions and best practices center](#) > [Higher education](#) > Create midterm course evaluations



Create midterm course evaluations

A [PDF version](#) of this guide has been made available.

This guide will focus primarily on the **project setup for midterm course evaluations**. A midterm evaluation allows instructors to collect student feedback in the middle of a course to address potential issues before the end-of-term assessment. Each instructor will have the option to participate in their own separate midterm evaluation. If the instructor decides to opt in and launch a midterm evaluation, they may be able to adjust the schedule, create or select questions, monitor response rates in real-time, and download the results.

What we are building

A midterm evaluation that allows each instructor to opt-in to having their courses evaluated ahead of the end-of-term evaluations.

Our choices

The following parameters will be applied throughout this guide:

- **Instructors choose to participate:** Each instructor can opt in to have their courses evaluated for the midterm. If they take no action, their midterm evaluations will not launch.
- **Independent evaluations for team-taught:** For team-taught courses, each instructor will launch their own separate midterm course evaluations independent of other instructors belonging to the same class.
- **Instructor questions only:** Only questions that the instructor adds will be asked.
- **Delegated timing:** Instructors can adjust the timing of the evaluation.
- **Instant results:** Instructors are able to download anonymous responses the moment the evaluation ends, in addition to reports.
- **Instructor reports only:** Reports are shared only with the instructors.

What is needed for setting up this type of evaluation project:

Other Possibilities

- **Culture Assessments**
- **Student opinion surveys**
- **Facility Evaluations**
- **Employee engagement**
- **Pandemic “Pulse checks”**
- **Employee On-boarding**

Thanks!